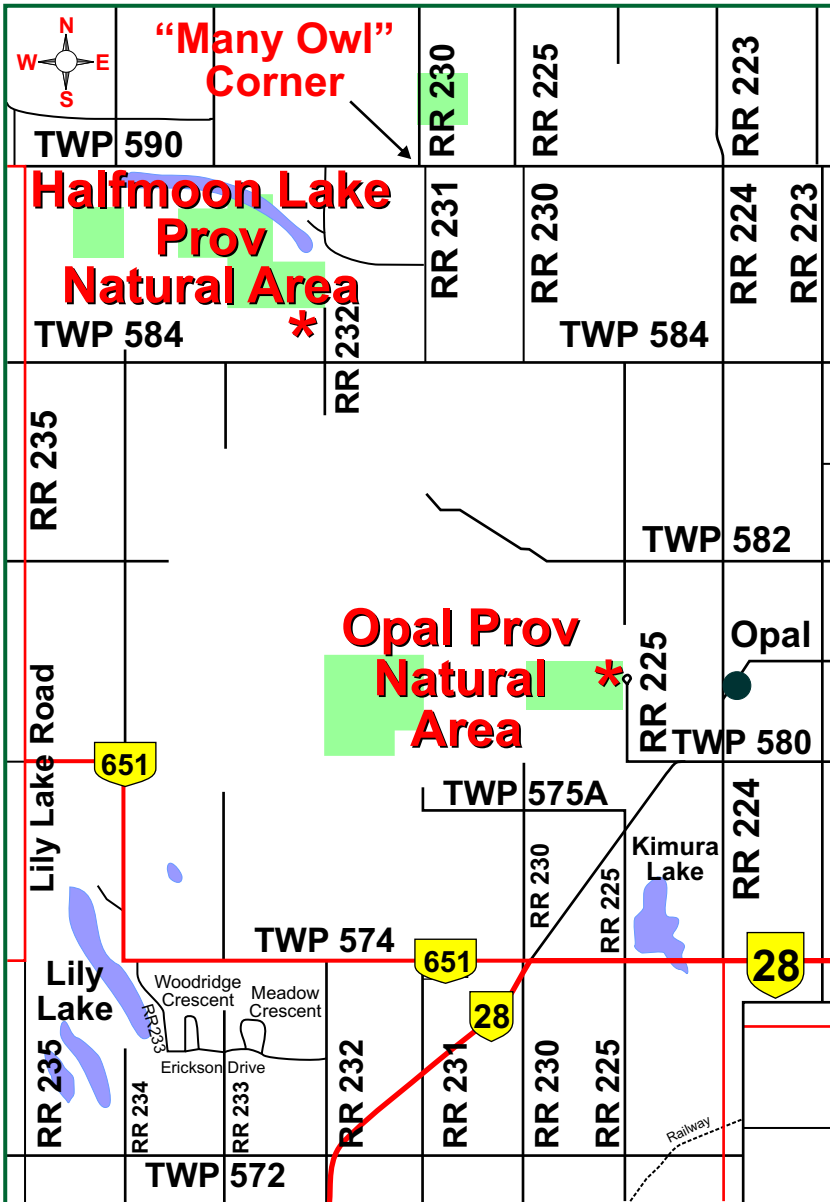




Opal and Halfmoon Lake Provincial Natural Areas Map



* **Opal Provincial Natural Area:** Access to the area is at RR 225 (Google has this RR labelled as 224A) north of Twp 580. It is a dead end road with space for only a few cars to park.

* **Halfmoon Lake Provincial Natural Area:** Access is at a dead end on RR 232, north of Twp 584.

The trails in these parks are not well marked.

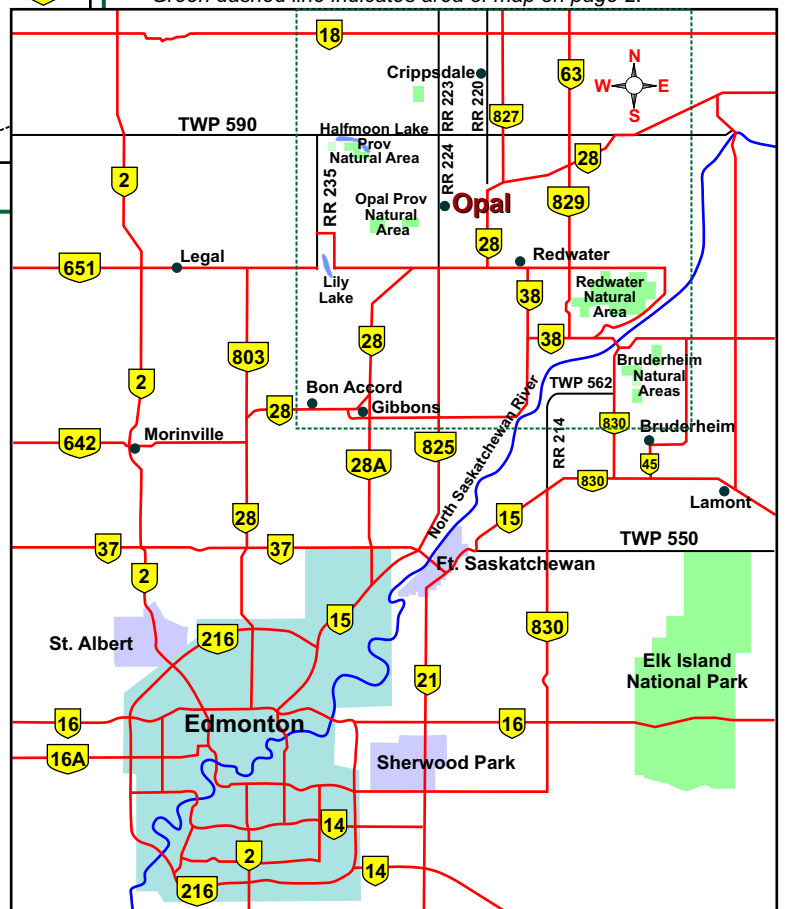
"Many Owl" Corner: Given this name by Ray Cromie. Located at Twp 590 and RR 230(N) is an area where Great Grey Owls have been seen on occasion.

See page 2 for another map showing a larger area.

Not all roads are shown on the maps. Back roads in Alberta are not all good quality and some may be muddy when wet. This is not indicated on the map. Every effort has been made for accuracy; if you find an error, please contact ENC.

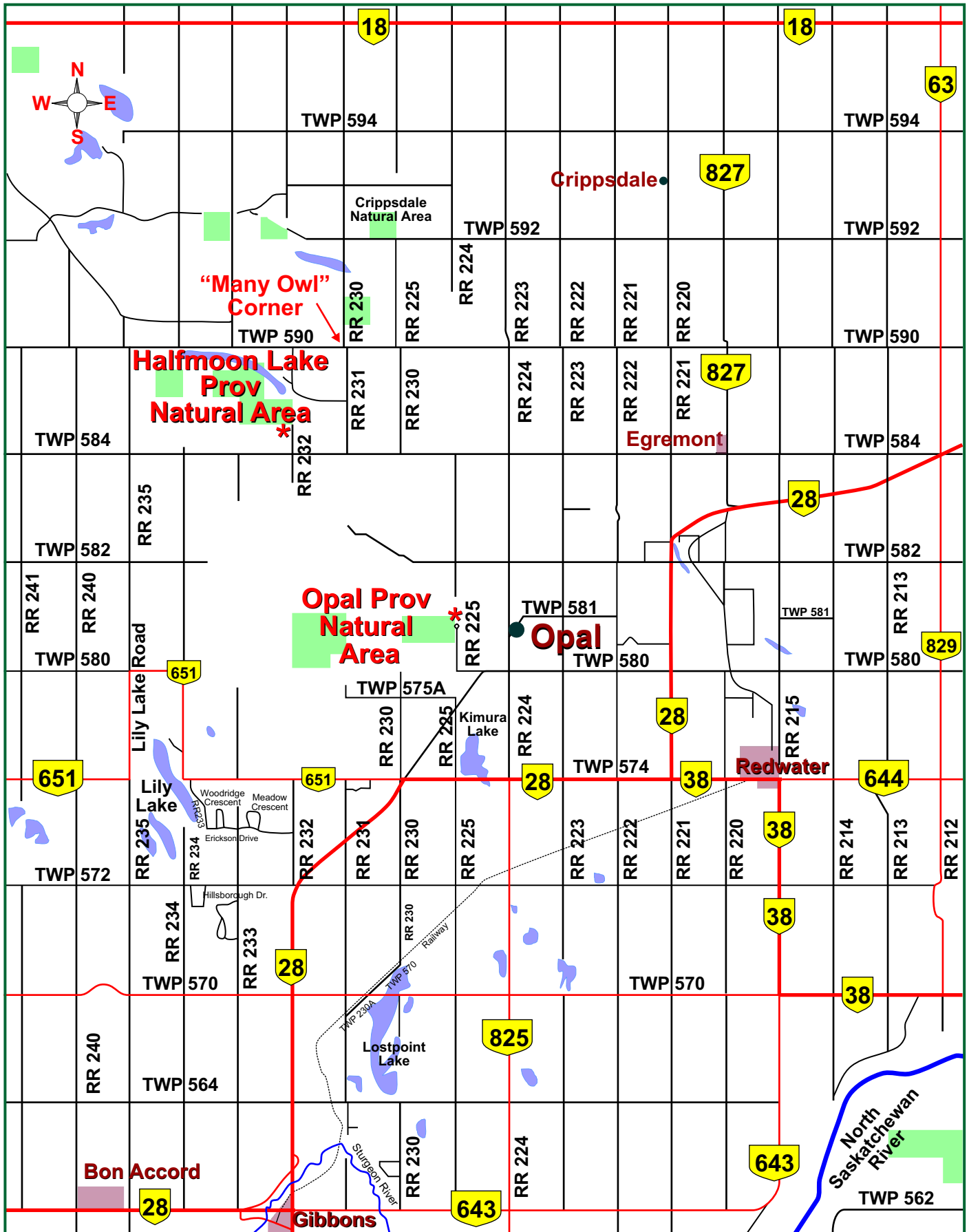
Routes from Edmonton

Green dashed line indicates area of map on page 2.





Opal and Halfmoon Lake Provincial Natural Areas Map



Not all roads are shown on the maps. Back roads in Alberta are not all good quality and some may be muddy when wet. This is not indicated on the map. Every effort has been made for accuracy; if you find an error, please contact ENC.